

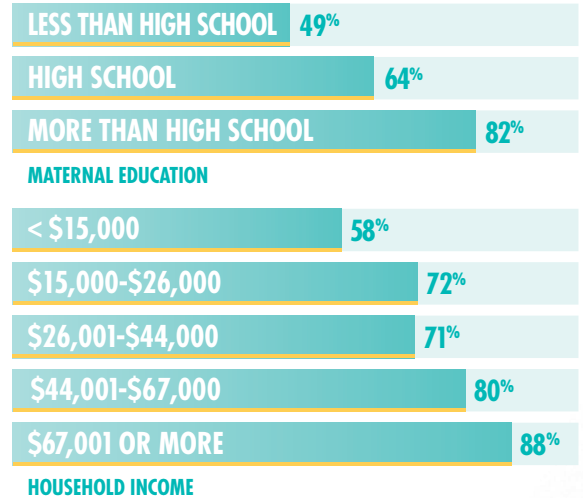
GET MOTHERS IN FOR PRENATAL CARE *early and often*



Early and adequate prenatal care is **IMPORTANT** to improve pregnancy and birth outcomes.*

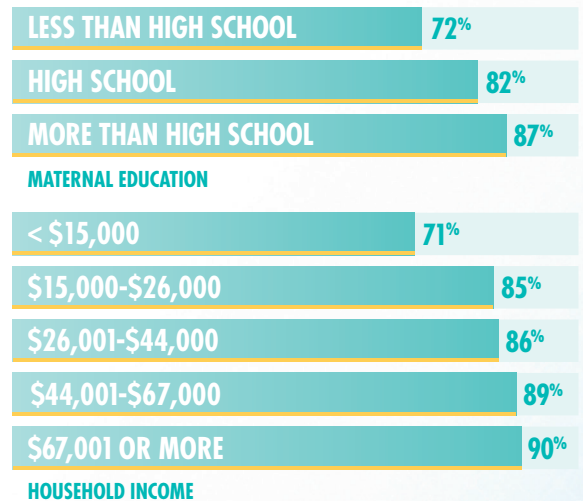
EARLY PRENATAL CARE is influenced by education & income*

Mothers with prenatal care in their 1st Trimester



ADEQUATE PRENATAL CARE is influenced by education & income*

Mothers who attended 80%+ scheduled visits



TOP 3 BARRIERS

PREVENTING MOTHERS FROM RECEIVING PRENATAL CARE AS EARLY AS THEY WANTED

STATEWIDE

- + Did not know she was pregnant (44%)
- + Could not get an appointment when she wanted one (28%)
- + Had too many other things going on (22%)

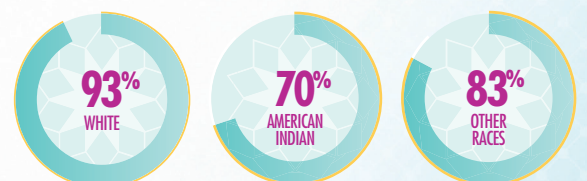
TOP 3 BARRIERS

PREVENTING MOTHERS FROM ATTENDING ALL OF THEIR PRENATAL CARE VISITS

STATEWIDE

- + Did not have transportation to clinic or doctor's office (35%)
- + Had too many other things going on (32%)
- + Couldn't take time off from work or school (21%)

Mothers who **BEGAN PRENATAL CARE** as early as they wanted*



* Early prenatal care defined as care beginning in first trimester; adequate care defined as attending 80% or more of scheduled prenatal care visits based on when prenatal care began.

* Data from South Dakota PRAMS-like report. Full report: doh.sd.gov/documents/statistics/2016-SD-PRAMS.pdf

200 copies of this document were printed by the SD Department of Health at a cost of 43¢ each • Revised September 2018

what can we DO?



- 1 Promote yearly check-ups** for all women of childbearing age
- 2 Talk to your patients** about the early signs of pregnancy during their yearly check-up
- 3 Make scheduling new pregnant moms a priority** in your clinic/facility
- 4 Refer uninsured women** to Medicaid or Healthcare.gov to get coverage
- 5 Support community efforts** to provide public transportation
- 6 Encourage participation in Text4Baby** (Text4Baby.org)