

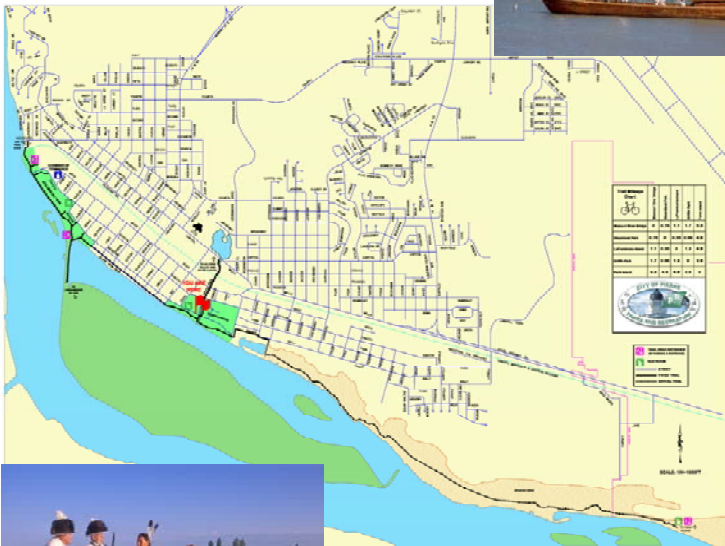


Welcome to Griffon Park! Griffon Park is located next to the Great Missouri, on which Meriwether Lewis and William Clark travelled during their Journey to the Pacific Ocean. Lewis and Clark's travels through this area have been considered as one of the most pivotal moments in the history of the Lewis and Clark expedition. It was just across the river where the expedition met with the Teton Sioux and conflict arose. With no interpreter on either side, tensions strained from the lack of communication, leading to several misunderstandings over the intent of the expedition. After several days of intense meetings with the Tetons and a few confrontations, the corps finally continued upriver.

The Lewis and Clark Bicentennial Trail spans 26 miles between the Oahe Dam in Stanley County and Farm Island Recreation Area in Hughes County.



On May 21 of 1804 Meriwether Lewis and William Clark led "The Corps of Discovery" on an adventure that would map a new route from St. Lewis to the Pacific. The two year journey took Lewis and Clark some 8000 miles through the Upper Midwest and Northwest United States passing through this area. Lewis and Clark's expedition to the Pacific Ocean laid the groundwork for westward expansion in the United States.



Helpful Hints:

- Avoid direct sun, use sunscreen, wear sunglasses and a hat.
- Drink water every 15-20 minutes to prevent dehydration.
- Mosquitoes are most active between dusk and dawn.
- For tick prevention, avoid walking through tall

grass and wear light colored clothing.

- During winter months, dress in lightweight layers, wear a hat, stay dry, and limit outside time when cold and windy.

Trail Users

- Obey all traffic laws, signs and signals. Stay on the right of the trail and be aware of other trail users.
- Do not disturb wildlife.
- Camping is allowed only at established campsites
- Motorized vehicles are not allowed on trails.
- Wear protective gear.
- In case of an emergency, call 911 for assistance or Pierre Police at 605-773-7410



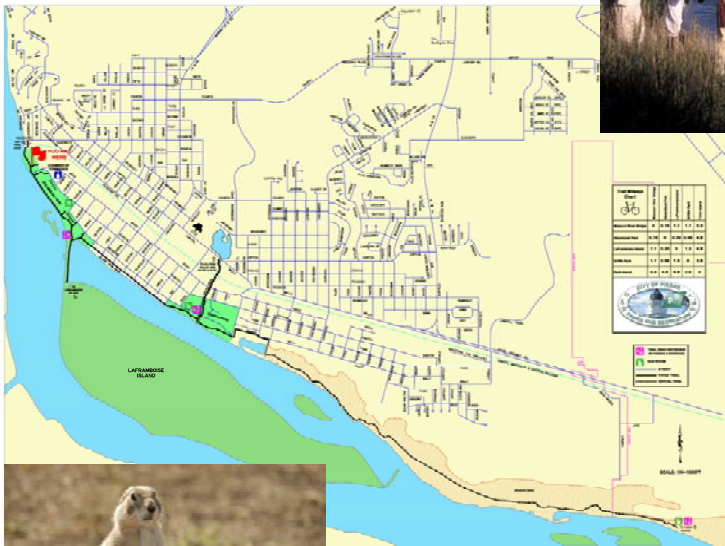


Welcome to the Lewis and Clark Trail! The trail is located next to the Great Missouri, on which Meriwether Lewis and William Clark travelled during their Journey to the Pacific Ocean. Lewis and Clark's travels through this area have been considered as one of the most pivotal moments in the history of the Lewis and Clark expedition. It was just across the river where the expedition met with the Teton Sioux and conflict arose. With no interpreter on either side, tensions strained from the lack of communication, leading to several misunderstandings over the intent of the expedition. After several days of intense meetings with the Teton Sioux and a few confrontations, the corps finally continued upriver.

The Lewis and Clark Bicentennial Trail spans 26 miles between the Oahe Dam in Stanley County and Farm Island Recreation Area in Hughes County.

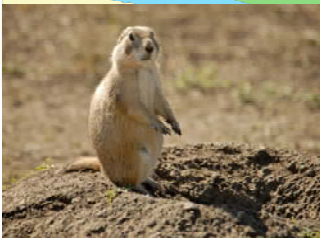


On May 21 of 1804 Meriwether Lewis and William Clark led "The Corps of Discovery" on an adventure that would map a new route from St. Lewis to the Pacific. The two year journey took Lewis and Clark some 8000 miles through the Upper Midwest and Northwest United States passing through this area. Lewis and Clark's expedition to the Pacific Ocean laid the groundwork for westward expansion in the United States.



Helpful Hints:

- Avoid direct sun, use sunscreen, wear sunglasses and a hat.
- Drink water every 15-20 minutes to prevent dehydration.
- Mosquitoes are most active between dusk and dawn.
- For tick prevention, avoid walking through tall grass and wear light colored clothing.
- During winter months, dress in lightweight layers, wear a hat, stay dry, and limit outside time when cold and windy.



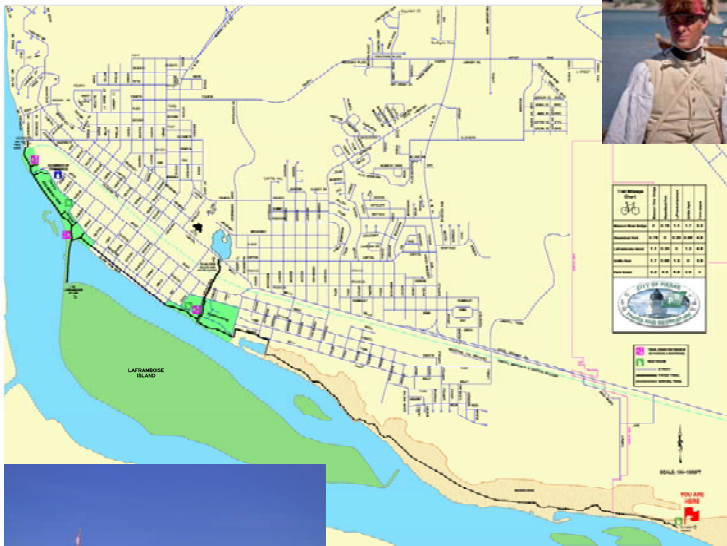
Trail Users

- Obey all traffic laws, signs and signals. Stay on the right of the trail and be aware of other trail users.
- Do not disturb wildlife.
- Camping is allowed only at established campsites.
- Motorized vehicles are not allowed on trails.
- Wear protective gear.
- In case of an emergency, call 911 for assistance or Pierre Police at 605-773-7410



Welcome to the Lewis and Clark Trail! The trail is located next to the Great Missouri, on which Meriwether Lewis and William Clark travelled during their Journey to the Pacific Ocean. Lewis and Clark's travels through this area have been considered as one of the most pivotal moments in the history of the Lewis and Clark expedition. It was just across the river where the expedition met with the Teton Sioux and conflict arose. With no interpreter on either side, tensions strained from the lack of communication, leading to several misunderstandings over the intent of the expedition. After several days of intense meetings with the Teton Sioux and a few confrontations, the corps finally continued upriver.

The Lewis and Clark Bicentennial Trail spans 26 miles between the Oahe Dam in Stanley County and Farm Island Recreation Area in Hughes County.



On May 21 of 1804 Meriwether Lewis and William Clark led "The Corps of Discovery" on an adventure that would map a new route from St. Lewis to the Pacific. The two year journey took Lewis and Clark some 8000 miles through the Upper Midwest and Northwest United States passing through this area. Lewis and Clark's expedition to the Pacific Ocean laid the groundwork for westward expansion in the United States.

Helpful Hints:

- Avoid direct sun, use sunscreen, wear sunglasses and a hat.
- Drink water every 15-20 minutes to prevent dehydration.
- Mosquitoes are most active between dusk and dawn.
- For tick prevention, avoid walking through tall grass and wear light colored clothing.
- During winter months, dress in lightweight layers, wear a hat, stay dry, and limit outside time when cold and windy.



Trail Users

- Obey all traffic laws, signs and signals. Stay on the right of the trail and be aware of other trail users.
- Do not disturb wildlife.
- Camping is allowed only at established campsites.
- Motorized vehicles are not allowed on trails.
- Wear protective gear.
- In case of an emergency, call 911 for assistance or Pierre Police at 605-773-7410

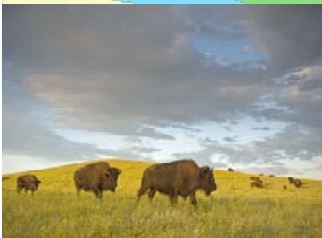


Welcome to Steamboat Park! Steamboat Park is located next to the Great Missouri, on which Meriwether Lewis and William Clark travelled during their Journey to the Pacific Ocean. Lewis and Clark's travels through this area have been considered as one of the most pivotal moments in the history of the Lewis and Clark expedition. It was just across the river where the expedition met with the Teton Sioux and conflict arose. With no interpreter on either side, tensions strained from the lack of communication, leading to several misunderstandings over the intent of the expedition. After several days of intense meetings with the Teton Sioux and a few confrontations, the corps finally continued upriver.

The Lewis and Clark Bicentennial Trail spans 26 miles between the Oahe Dam in Stanley County and Farm Island Recreation Area in Hughes County.



On May 21 of 1804 Meriwether Lewis and William Clark led "The Corps of Discovery" on an adventure that would map a new route from St. Lewis to the Pacific. The two year journey took Lewis and Clark some 8000 miles through the Upper Midwest and Northwest United States passing through this area. Lewis and Clark's expedition to the Pacific Ocean laid the groundwork for westward expansion in the United States.



Helpful Hints:

- Avoid direct sun, use sunscreen, wear sunglasses and a hat.
- Drink water every 15-20 minutes to prevent dehydration.
- Mosquitoes are most active between dusk and dawn.
- For tick prevention, avoid walking through tall

grass and wear light colored clothing.
- During winter months, dress in lightweight layers, wear a hat, stay dry, and limit outside time when cold and windy.

Trail Users

- Obey all traffic laws, signs and signals. Stay on the right of the trail and be aware of other trail users.
- Do not disturb wildlife.
- Camping is allowed only at established campsites
- Motorized vehicles are not allowed on trails.
- Wear protective gear.
- In case of an emergency, call 911 for assistance or Pierre Police at 605-773-7410